

# E87/E88/E89

Typically used in auxiliary and accessory circuits in truck, bus', RVs and marine systems . Others include battery chargers and DC audio systems. engine compartment and bilge area applications. Automatic reset, Modified reset and Manual reset is available.



## Description:

- Single pole thermal type breakers.
- Rating: 5-30A , 14 Vdc(E87&E88) ; 28Vdc(E89).
- Interrupt Rating: 150A -450A@ 14 Vdc.
- Operating Temperature Rating: -40 °C to 85 °C.
- Storage Temperature Rating: -40 °C to 125 °C.
- Materials: UL-Rated 94V0 thermoplastic body. Tin-plated copper alloy terminals.
- Marking: Standard marking includes amp/volt ratings, part number and date code.
- Termination: Compatible with ATC fuse blocks .
- Compliances: SAEJ553; SAEJ1171(ignition protected)

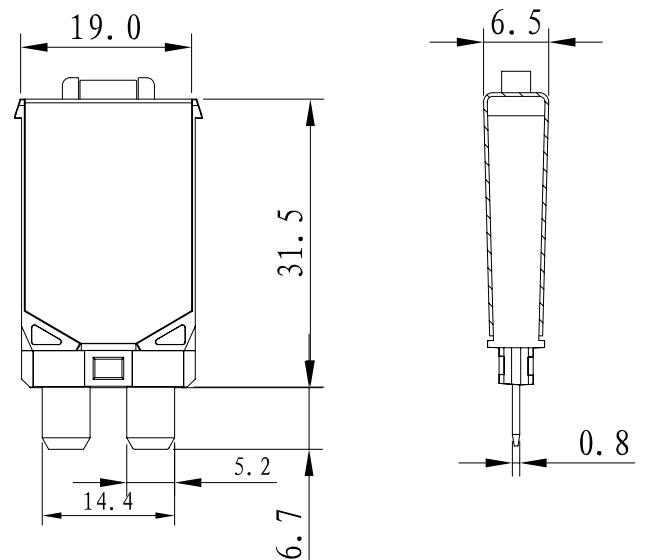
## Electrical Characteristics:

- Over-load Percentage 100% : No trip with 60 minutes.
- Over-load Percentage 150% : Trip within 20 minutes.
- Over-load Percentage 200% : Trip within 60 sec.

## Part Numbering System:

E8	□ □ A	00	
			00 - Standard ,Marking (Consult factory for special markings)
			5-30A is available.
E87 [Yellow] Automatic Reset Type I E88 [White] Modified Reset Type II E89 [White] Manual Reset Type III			

## Dimensions: mm



## Standard Marking:

